



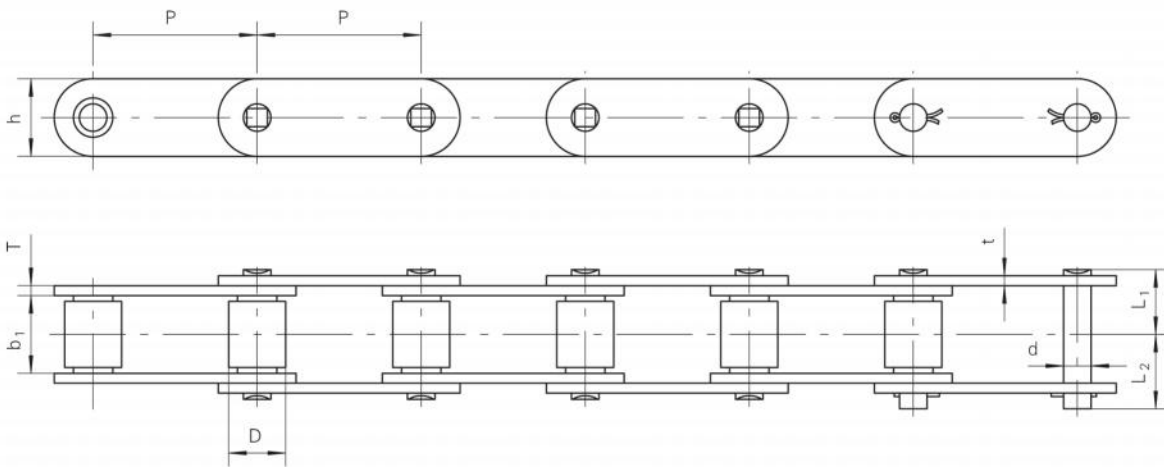
目录 CONTENTS

木材输送机

Lumber Conveyor Chains

81X系列滚子链 81X Series of Roller Chains.....	1
81X系列滚子链附件 81X Series of Roller Chains -Attachments.....	2-4
3939系列滚子链 3939 Series of Roller Chains.....	5

81X系列滚子链 81X Series of Roller Chains



链号	节距	内节内宽	滚子外径	销轴			链板		最小抗拉强度	平均拉伸强度	每米重量
Chain No.	Pitch	Width Between inner Sideplates	Roller diameter	Pin			Sideplate		Ultimate tensile strength	Average tensile strength	Weight per meter
				d	L ₁	L ₂	h	t/T			
	mm	b ₁ (min)	D(max)	mm	mm	mm	mm	mm	kN	kN	kg/m
81X	66.27	26.99	23.02	11.1	24.5	27.8	28.6	4	106.7	128	3.8
81XH	66.27	26.99	23.02	11.1	29.6	32.7	31.4	5.6/7.5	152	175	5.83
81XHH	66.27	26.99	23.02	11.1	31.5	34.8	31.4	7.5	186.7	205	6.47
81XA	66.27	38	23.02	11.1	30.4	33.6	28.6	4	132	145	4.30
81-XH	66.27	26.99	23.02	11.1	30.1	33.2	32.1	5.6/8	152	175	6.11
81-XHH	66.27	27.84	23.02	11.1	32.9	36.2	32.1	8	186.7	205	6.97
81X-KC	66.27	26.99	23.02	11.1	25.13	28.43	28.6	4	98	147	3.82
81XXH	66.27	26.99	23.02	11.1	31.5	34.8	31.4	7.5	152	175	6.47
*81XH-SAS	66.27	26.99	23.02	11.1	29.6	32.7	31.4	5.6/7.5	105	115	5.54
**81XSS	66.27	26.99	23.02	11.1	24.5	27.8	28.6	4	43	47	3.76
**81XHSS	66.27	26.99	23.02	11.1	29.6	32.7	31.4	5.6/7.5	105	115	5.74

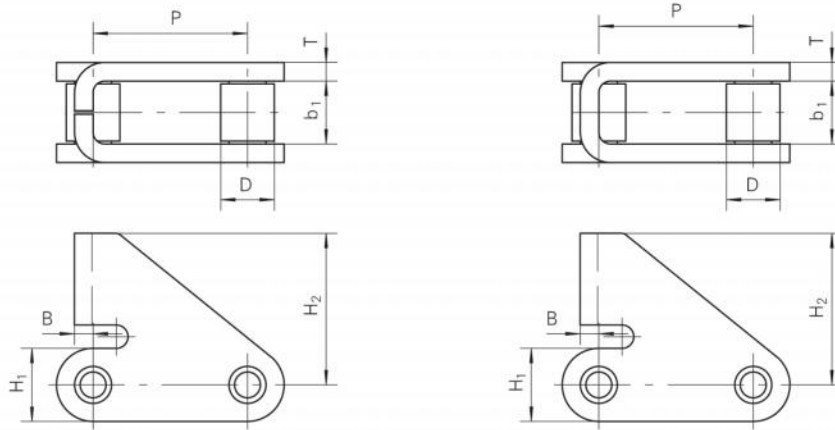
带*链条链板材质为不锈钢。

*Chains: The material of Sideplates is stainless steel

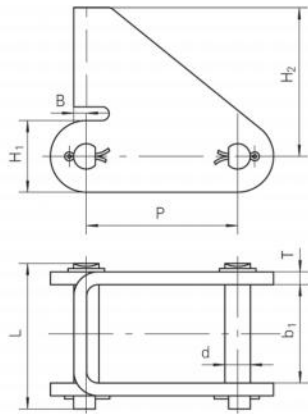
带**链条所有零件材质为不锈钢。

**Chains: The material of all component parts is stainless steel

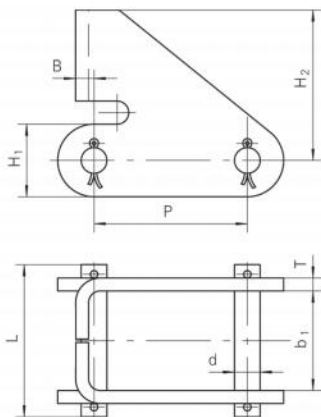
81X系列滚子链附件 81X Series of Roller Chains- Attachments



链号 Chain No.	P mm	b ₁ (min) mm	B mm	D(max) mm	H ₁ mm	H ₂ mm	T mm	Type
81X • PUSHER	66.27	26.99	5.5	23.02	28.6	65.1	4	I
81-XH PUSHER	66.27	26.99	8	23.02	31.4	65.1	8	I
81X • PUSHER-B	66.27	26.99	5.5	23.02	28.6	65.1	4	II

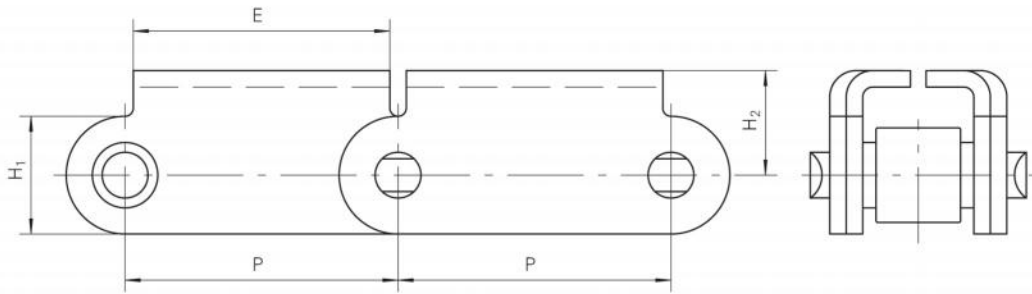


链号 Chain No.	P mm	b ₁ (min) mm	B mm	d mm	H ₁ mm	H ₂ mm	T mm	L mm
81X • PUSHER-A	66.27	35.6	5.5	11.11	28.6	65.1	4	53.9

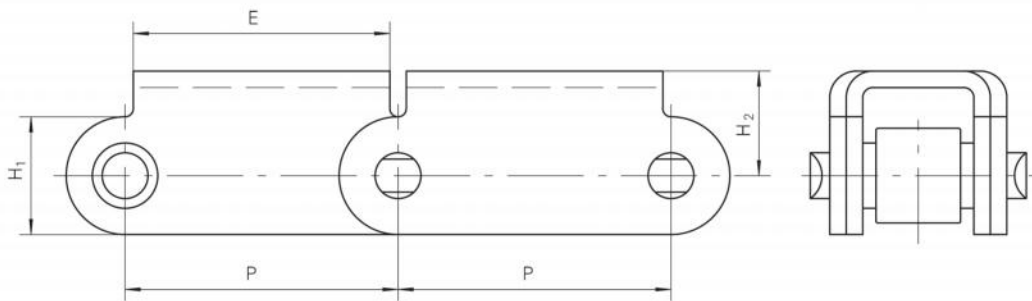


链号 Chain No.	P mm	b ₁ (min) mm	B mm	d mm	H ₁ mm	H ₂ mm	L mm	T mm
81-XH PUSHER	66.27	43.6	8	11.1	31.4	65.1	66.8	5.6

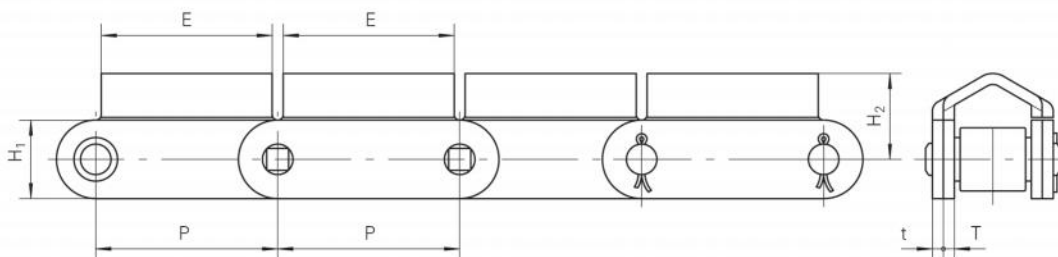
81X系列滚子链附件 81X Series of Roller Chains- Attachments



链号	P	E	H ₁	H ₂
Chain No.	mm	mm	mm	mm
81X-RT	66.27	63.5	28.6	25.4

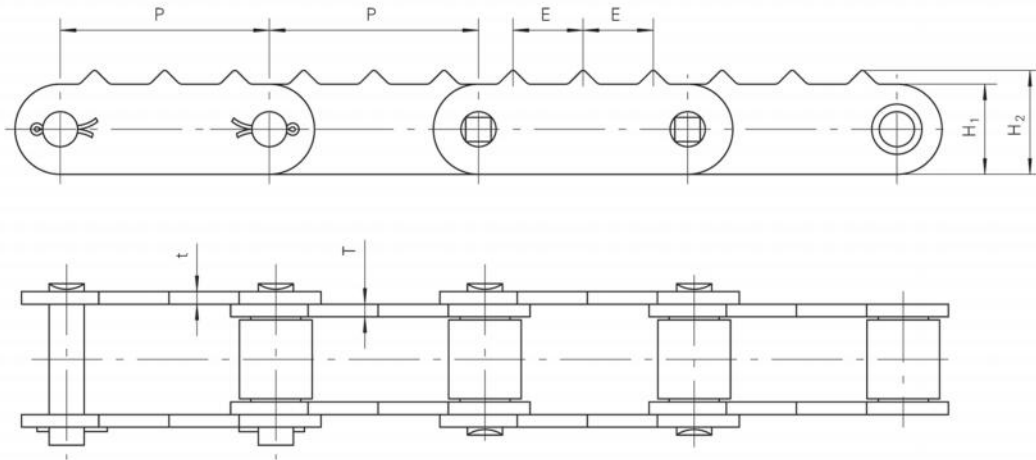


链号	P	E	H ₁	H ₂
Chain No.	mm	mm	mm	mm
81X-RTA	66.27	63.5	28.6	25.4

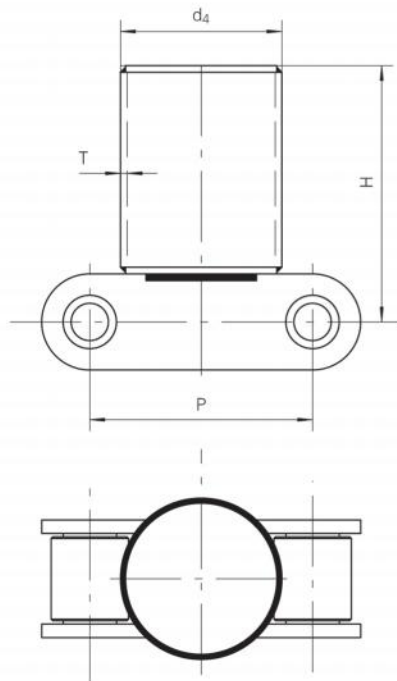


链号	P	E	t/T	H ₁	H ₂
Chain No.	mm	mm	mm	mm	mm
81XA-RT	66.27	63.5	4	28.6	31.75

81X系列滚子链附件 81X Series of Roller Chains- Attachments

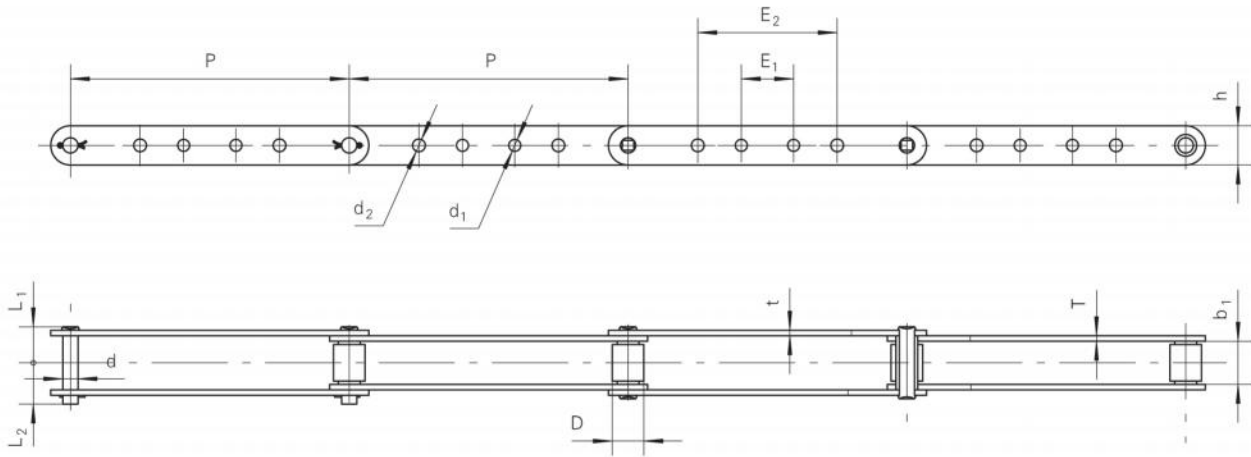


链号	P	E	t/T	H ₁	H ₂
Chain No.	mm	mm	mm	mm	mm
81X-STD	66.27	22.23	4	28.6	33.35



链号	P	d ₄	H	T
Chain No.	mm	mm	mm	mm
81X-RS • 12P	66.27	48	114.3	2

3939系列滚子链 3939 Series of Roller Chains



链号	节距	内节内宽	滚子外径	销 轴			链 板						最小抗拉强度	平均拉伸强度	每米重量
Chain No.	Pitch	Width Between inner Sideplates	Roller diameter	Pin			Sideplate						Ultimate tensile strength	Average tensile strength	Weight per meter
	P	$b_1(\text{min})$	$D(\text{max})$	d	L_1	L_2	h	d_1	d_2	E_1	E_2	t/T	$F_u(\text{min})$	Q_o	q
	mm	mm	mm	mm	mm	mm	mm	mm	mm	mm	mm	mm	kN	kN	kg/m
3939	203.2	26.99	23.02	11.1	24.5	27.8	28.6	6.35	/	38.1	/	4	122.25	134	2.41
D3939-B21	203.2	26.99	23.02	11.1	24.5	27.8	28.6	7.14	/	38.1	/	4	122.25	134	2.41
D3939-B4	203.2	26.99	23.02	11.1	24.5	27.8	28.6	7.14	7.14	38.1	101.6	4	122.25	134	2.38
D3939-B43	203.2	26.99	23.02	11.1	24.5	27.8	28.6	7.14	10.3	38.1	92.1	4	122.25	134	2.35
D3939S-B4	203.2	26.99	22.23	11.1	29.3	32.6	28.6	7.14	7.14	38.1	101.6	6.4	152.00	167	3.53
S3939H-B4	203.2	26.99	23.02	11.1	29.6	32.7	28.6	7.14	7.14	38.1	101.6	5.6/7.5	152	167	3.61
S3939H-B43	203.2	26.99	23.02	11.1	29.6	32.7	28.6	7.14	10.3	38.1	92.1	5.6/7.5	152	167	3.57
81X8P-ELA	203.2	26.99	23.02	11.1	24.5	27.8	28.6	/	10.3	/	101.6	4	122.25	134	2.40